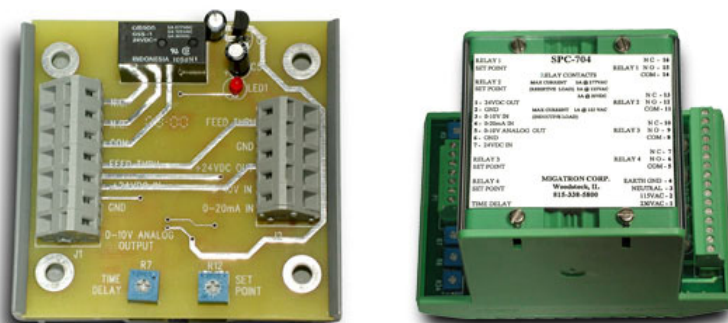


## SPC-701, SPC704 Set Point Controller



### Features

- Adjustable Setpoint Controller
- Analog Input
- Form C Relay Outputs
- Analog Output

#### SPC-701

One Adjustable Setpoint  
 Snap Track Mount or DIN rail mount  
 DC Power In  
 Feed Through Sensor Excitation power  
 WAGO Press Terminal Blocks

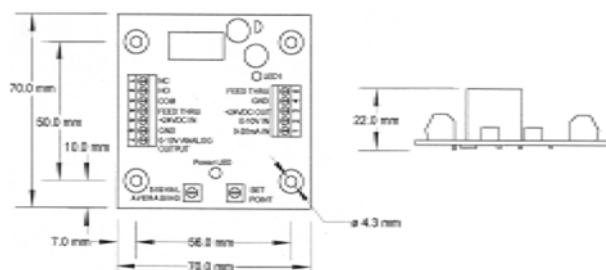
#### SPC-704

Four Adjustable Setpoints  
 DIN Rail Mount  
 AC or DC Power In  
 Sensor Excitation Power  
 Removable Terminal Blocks

The SPC-701 and SPC-704 are adjustable setpoint controllers with 1 or 4 setpoints. The setpoints are independently adjusted, with each having a Form C relay output. The controllers can be used with any sensor or device that produces 0-20mA, 4-20mA, 0-10V, or 2-10V analog output. The SPC-701 and SPC-704 will work with all our analog output sensors. Besides the relay outputs, there is also a 0-10V analog output. This analog output can be used to drive a meter or other analog drive controls. The analog output can also feed another SPC-701 or SPC-704 to provide additional setpoints. The SPC-704 has a built-in power supply that can provide 24VDC excitation power at 150mA to drive input sensors. The SPC-701 and SPC-704 have a signal averaging potentiometer that controllers have easy to view bright LEDs that show the relay and Power On status. The relay outputs can handle up to 3 amps. The SPC-701 setpoint controller can be mounted on Snap Track, DIN Rail (with optional DIN Rail mounting bracket, Part #7942742) or four studs. The terminal blocks are press to open for easy wiring. The SPC-701 is powered by 24VDC. There is an isolated feed thru path across the board that can be used as a wiring aid. The SPC-704 setpoint controller is DIN rail mountable. The terminal blocks are removable for easy wiring. The SPC-704 can be powered by either

## SPC-701, SPC704 Set Point Controller

115VAC, 230VAC 50/60Hz or 24VDC. Mechanically, the SPC-704 is made out of sturdy (UL 94) approved materials.



## Specifications for SPC-701

1. Input: 24VDC, @ 30 mA with no sensor, 230mA maximum with sensor
2. Excitation Power: 24VDC, @ 200mA (maximum)
3. Analog Input: 0-20mA, 4-20mA, 0-10VDC, 2-10VDC
4. Signal Input Resistance: (Voltage Input 100K Ohms) (Current Input 250 Ohms)
5. Set Point Range: (0-10VDC) (0-20mA)
6. Set Point Hysteresis 1%
7. Signal Averaging (Voltage Input 0-1s per Volt) (Current Input 0-.5s per mA)
8. Analog Output: (0-10VDC load 1K to infinity)
9. Relay Contacts: (Resistive Load, 2A@277AC and 3A@ 30VDC/125VAC)
10. Relay Contacts: (Inductive Load, 1A@125VAC)
11. Relay Switching: ( Min. Current 10mA) (Max. Voltage 30VDC/277VAC)
12. Operating Temperature Range: -25° to 70° C or -13° to 158°F
13. Humidity: 0 to 95% Non-Conducting

## Terminals

## Sensor Connections

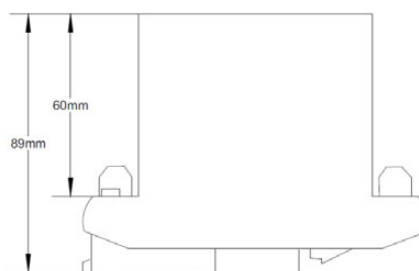
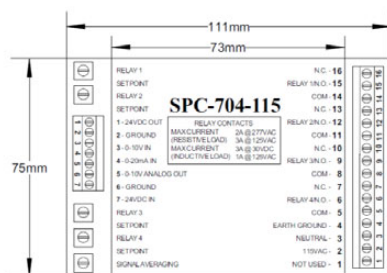
1. 0-20mA In
2. 0-10V In
3. 24VDC (Sensor Power)
4. GND (Sensor Ground)
5. Feed Thru

## Relay / Power Connections

1. N.C. Relay Contact
2. N.O. Relay Contact

## SPC-701, SPC704 Set Point Controller

3. COM Relay Contact
4. Feed Thru
5. 24VDC (Power In)
6. GND (Power Ground)
7. 0-10V Analog Out



### Specifications for SPC-704

1. Power Input: 115VAC, 230VAC 50/60 Hz @ 9VA or 24VDC @ 225mA
2. Excitation Power: 24VDC @ 150mA
3. Analog Input: 0-20mA, 4-20mA, 0-10V, 2-10V
4. Signal Input Resistance: (Voltage Input 100K Ohms) (Current Input 250 Ohms)
5. Set Point Range: (0-10VDC) (0-20mA)
6. Set Point Hysteresis 1%
7. Signal Averaging: (Voltage Input 0-1s per Volt) (Current Input 0-.5s per mA)
8. Analog Output: (0-10VDC load 1K to infinity)
9. Relay Contacts: (Resistive Load, 2A@277VAC and 3A@ 30VDC/125VAC)
10. Relay Contacts: (Inductive Load, 1A@125VAC)
11. Relay Switching: (Min. Current 10mA) (Max. Voltage 30VDC/277VAC)
12. Operating Temperature Range: -20 to 55°C or -4 to 131°F
13. Humidity: 0 to 95% Non-Conducting
14. Enclosure: Thermoplastic (UL 94 V2 and V4 material)

### Terminals

#### Sensor Connections

1. 24VDC (Sensor Power)
2. GND (Sensor Ground)
3. 0-10V In
4. 0-20mA In
5. 0-10V Analog Out
6. GND (Power Ground)
7. 24VDC (Power In)

## SPC-701, SPC704 Set Point Controller

### Relay / Power Connections

1. Not Used
2. 115VAC or 230VAC (Power In)
3. Neutral
4. Earth Ground
- 5-16. Relay Connections

### Ordering Code

Part Number	Description
SPC-701	Setpoint Controller, 1 Adjustable Output
SPC-704-115	Setpoint Controller, 4 Adjustable Outputs, 115VAC or 24VDC
SPC-704-230	Setpoint Controller, 4 Adjustable Outputs, 230VAC or 24VDC
F24-7942742	DIN Rail Mounting Bracket
F24-7942744	DIN 3 Rail (6" section)
F24-7942746	Snap Track TR2 (6" section)

**All electrical equipment should be installed by a qualified/certified electrician.**

Deeter Electronics follows a policy of continual development of its products and reserves the right to change specifications and/or features without notice