

RPS-2100 Ultrasonic Sensor Controller With Remote Sensing Head



Features

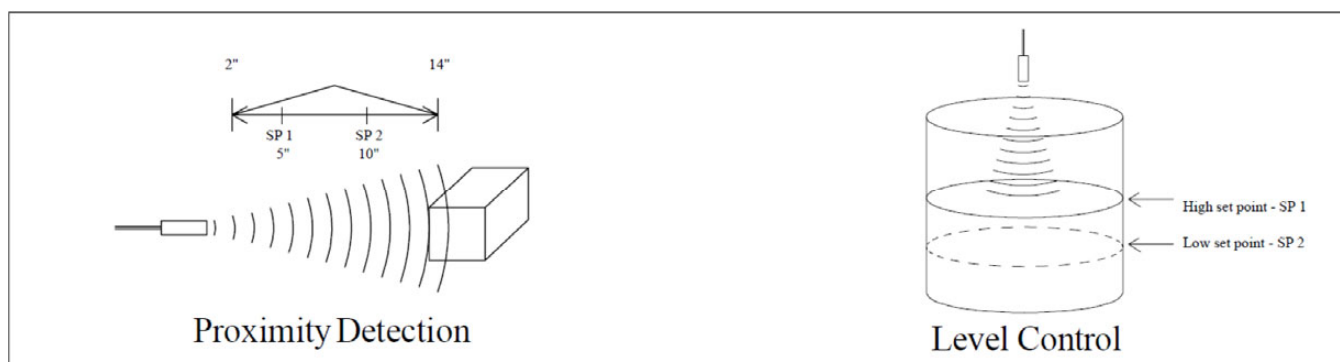
- Various Sensing Ranges
- Broad Sensing Beam
- Low Frequency - 38.5kHz
- 2-Way Power Operation
- Small Remote Transducer
- Adjustable Delay Controls
- 2 Independent Range Adjustments
- LED Indicators
- Isolated Form C Relay Outputs
- Small Electronic Controller

The RPS-2100 is a single transducer device with 2 independent range control adjustments, LED indicators, and form C relay outputs. These make the sensor well suited for high and low level control, or other applications where two set points are needed. This sensor also has a unique master and slave feature which enables many of the same units to be used within close proximity of one another without cross-talk interference. For example, if three sensors are needed in a close area, one sensor would be left as a master and the other two would be slaves. This is done by means of the X IN, X OUT, and GND connection on the board. One sensor (master) would send a signal by means of the X OUT and GND terminals. These would be connected to the X IN and GND terminals of the other two sensors (slaves). With the sensors connected in this way, all units would be transmitting and receiving at the same time. This then would prevent cross-talk and enable all three sensors to be used at the same time in close proximity of one another. There are also separate turn ON and turn OFF DELAY potentiometers provided for each set point.

RPS-2100 Ultrasonic Sensor Controller With Remote Sensing Head

All four DELAY controls are located along side the black module inside the enclosure box. The remote transducer allows for mounting of the sensor head in cramped spaces while the controller is out of the way. The (2) independent and isolated form C relays furnish N.O. and N.C. outputs. This sensor operates at a frequency of 38.5kHz, has a broad sensing beam which allows for detection of an object at greater angles of tilt. Sensing ranges

available for the RPS-2100 include 2" to 14", 5" to 72", and 10" to 240". Mounting flanges, LED indicators, ranging potentiometers, and 6-ft. transducer cable are included. Optional cable lengths are available.



Proximity Detection

Proximity detection is the detection of an object in a given range. The detection range of the RPS-2100 is controlled by the "Range Control" potentiometers located on the front cover of the controller. These potentiometers provide two detection points as an object moves closer to the transducer. Any object within the desired range is detected, while objects out of range are ignored. The detect point is independent of size, material, and reflectivity. The Proximity Option is denoted by the part number RPS-2100-14.

Level Control

The RPS-2100 provides 2 individual set points with independent relay outputs. The most common application for this unit is in level control. Using the range control potentiometers a high set point (SP 1) and a low set point (SP 2) can be set to keep a level in between a specific window. When the level goes above the high point (SP 1), relay one would be activated. If the level goes below the low point (SP 2), relay two would

RPS-2100 Ultrasonic Sensor Controller With Remote Sensing Head

be activated. The Level Control Option is denoted by using the same part number as the Proximity Option.
(Example: RPS-2100-14)

RPS-2100 Ultrasonic Sensor Controller With Remote Sensing Head

Specifications:

Operational Range:	Adjustable 2" to 14" Adjustable 5" to 72" Adjustable 10" to 240"		
Power Input:	120VAC 15 - 24VDC		
Input Current:	40 Milliamps		
Ambient Temperature:	0°C to 60°C or 32°F to 140°F		
Controller:	Metal Enclosed		
Transducer:	Aluminum Transducer in Epoxy filled plastic housing		
Output: (2) N.O., N.C.	Isolated Form C Relay .5 Amp Maximum at 120VAC		
Transducer Frequency:	38.5kHz		
Adjustable Response Time:	2" to 14" 30mS – On 30mS – Off	5" to 72" 100mS – On 100mS – Off	10" to 240" 250mS – On 250mS – Off
Weight of Controller:	34.2 ounces		
Weight of Transducer:	2.2 ounces		

RPS-2100 Ultrasonic Sensor Controller With Remote Sensing Head

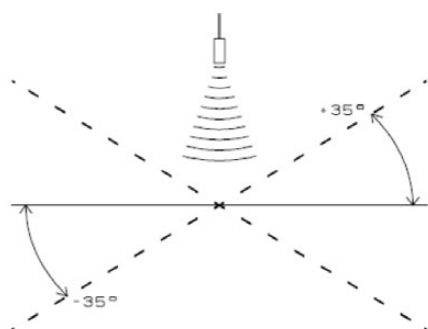


Fig. A

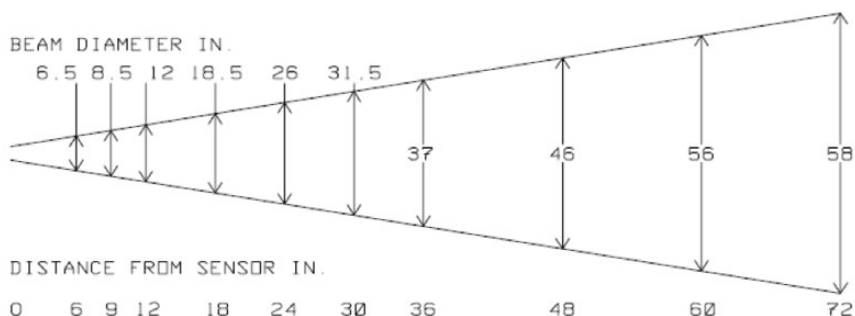


Fig. B

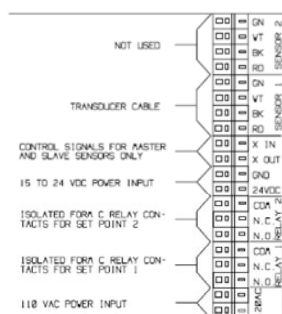
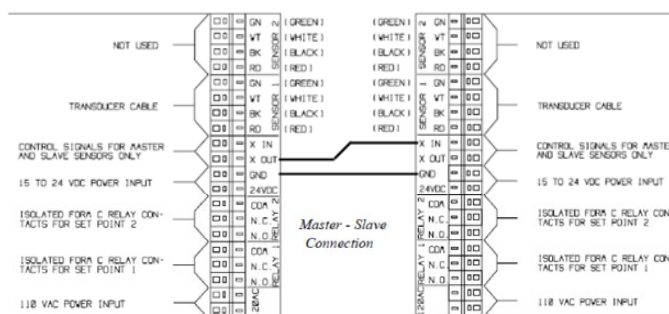


Fig. C



Master Unit

Fig. D

Slave Unit

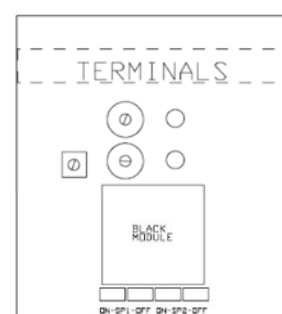


Fig. E

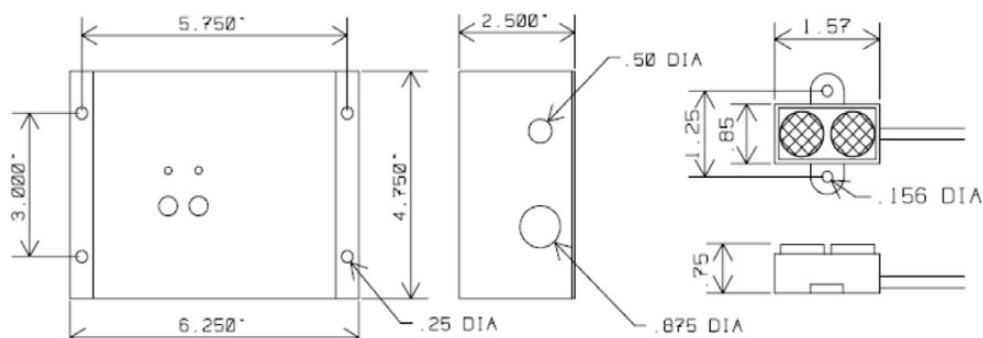


Fig. F

Figure:

A - Angle of Tilt

B - Beam Spread

C - Wiring Diag.- For RPS-2100

RPS-2100 Ultrasonic Sensor Controller With Remote Sensing Head

D - Wiring Diag.- For Master-Slave Configuration

E - Delay Controls – For RPS-2100

F - Mounting Dimensions

Ordering Codes

Part Number	Range	Output
RPS-2100-14	2" - 14"	(2) Isolated form C Relays
RPS-2100-72	5" - 72"	(2) Isolated form C Relays
RPS-2100-240	10" - 240"	(2) Isolated form C Relays

All electrical equipment should be installed by a qualified/certified electrician.

Deeter Electronics Ltd follows a policy of continual development of its products and reserves the right to change specifications and/or features without notice